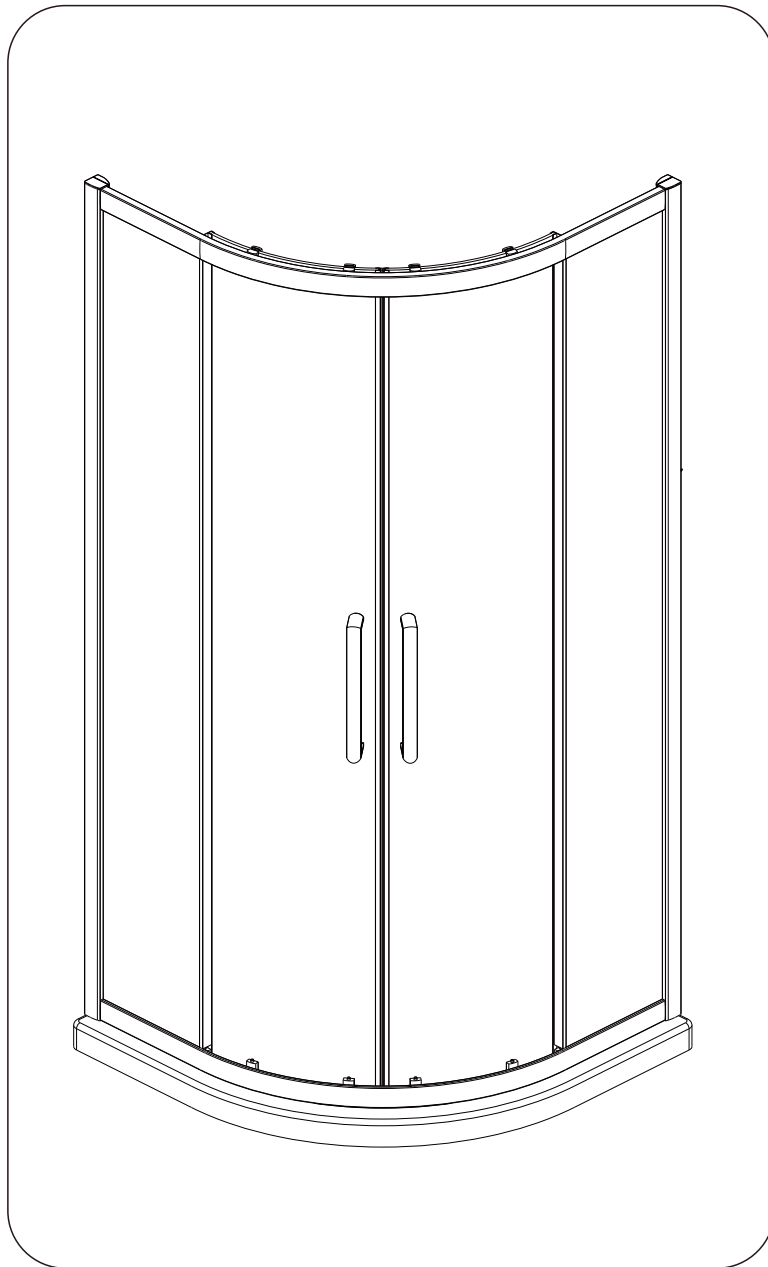


EMERALD8 2 DOOR QUAD

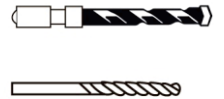
INSTALLATION INSTRUCTIONS



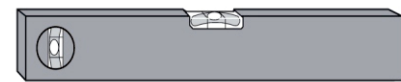
Tools Required



Drill



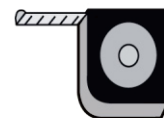
6mm Masonry Drill
3.2mm HSS Drill



Spirit level



Sealant Gun



Tape Measure



Pencil



**PH2 TYPE
Screwdriver**

Please note hand tools **NOT** supplied.

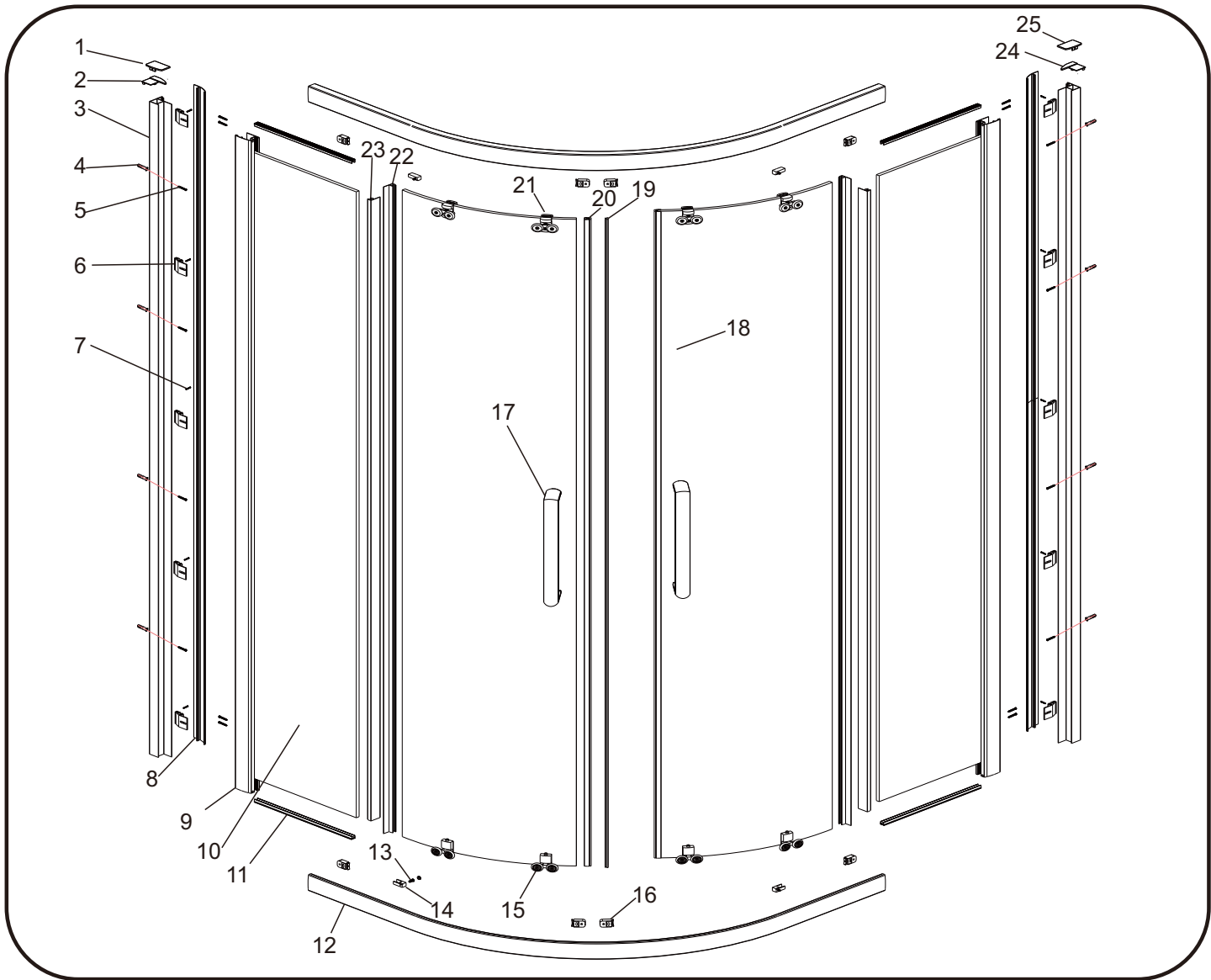
IMPORTANT

These instructions assume that installation is done against solid/tiled walls.

The wall plugs supplied with the installation kit are for use on solid walls. Hollow or stud-partition walls will require alternative fixings. Please consult with a reputable trades person or hardware supplier for the correct type of fixing.

It may also be necessary to consult your tiling supplier about the correct method drilling your tiles.

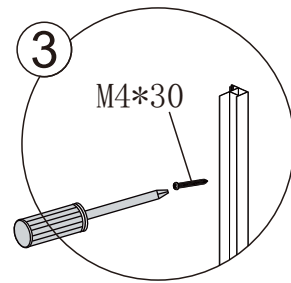
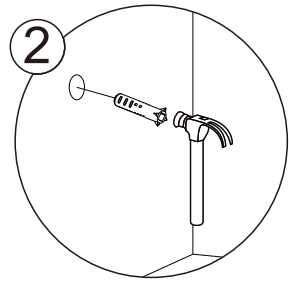
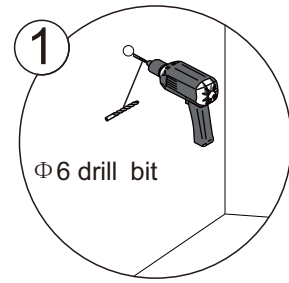
Components And Box Contents



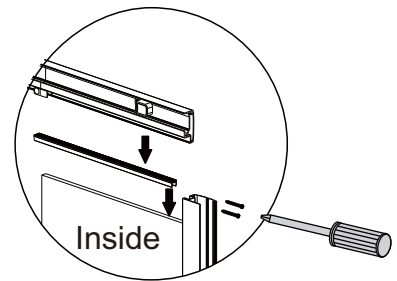
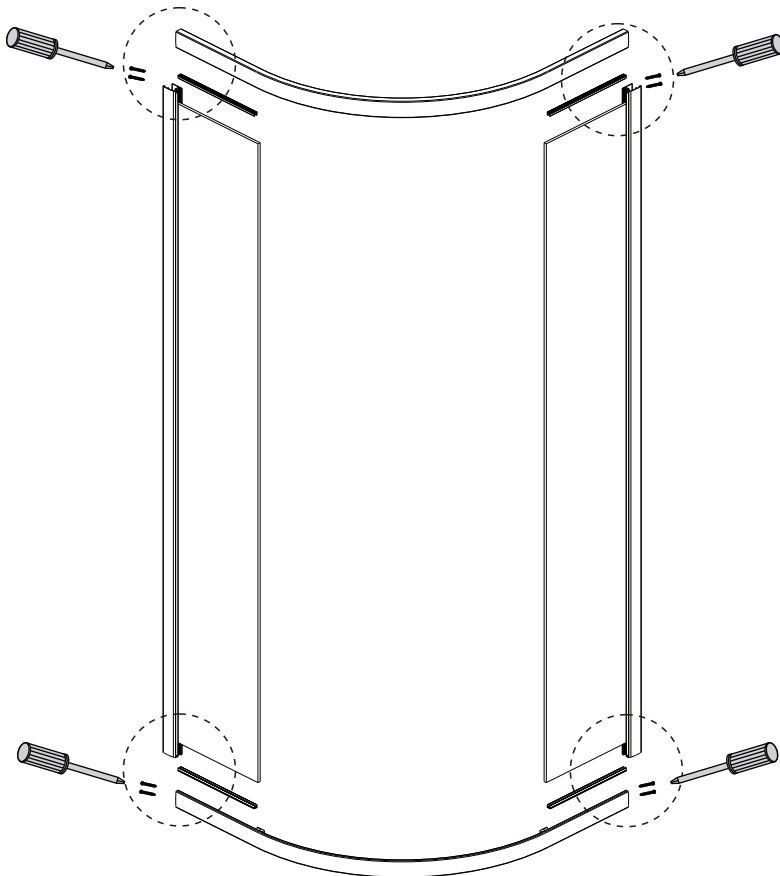
NO.	Description	Qty	NO.	Description	Qty
1	Left Cover caps A	1	14	Chrome Parts	4
2	Left Cover caps B	1	15	Bottom Rollers	4
3	Wall Profile	2	16	Stopper	8
4	Wall Plug	8	17	Handles	2
5	Screw M4*30	16	18	Moving Glass Panel	2
6	Plastic Parts	10	19	Magnet	2
7	Screw M4*10	10	20	Chrome Closing Strip	2
8	Cover Strips	2	21	Top Rollers	4
9	Vertical Profile A	2	22	Vertical Seal A	2
10	Fixed Panel	2	23	Vertical Seal B	2
11	Bottom Seals	4	24	Right Cover Caps A	1
12	Rail	2	25	Right Cover Caps B	1
13	Screw M4*10	12	26		

Installation Steps

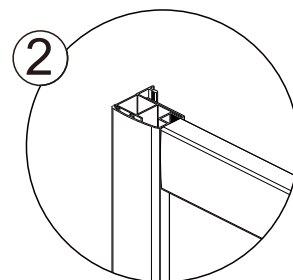
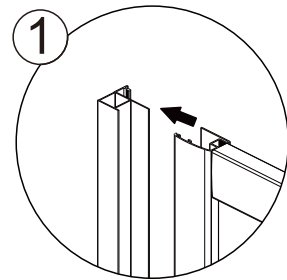
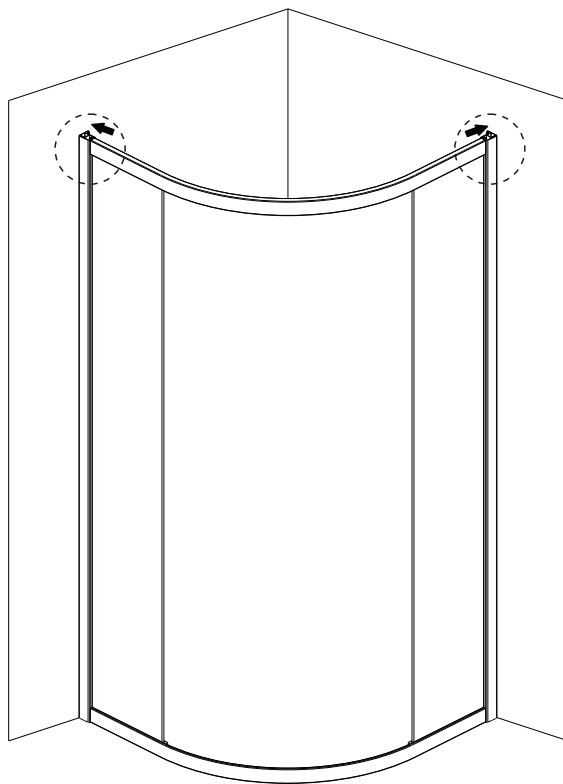
Step1



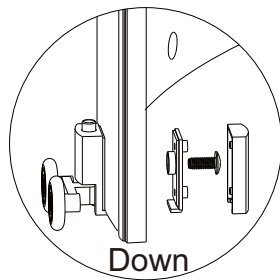
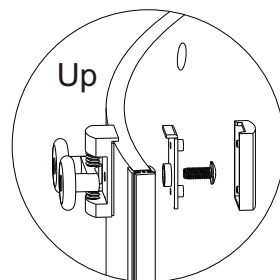
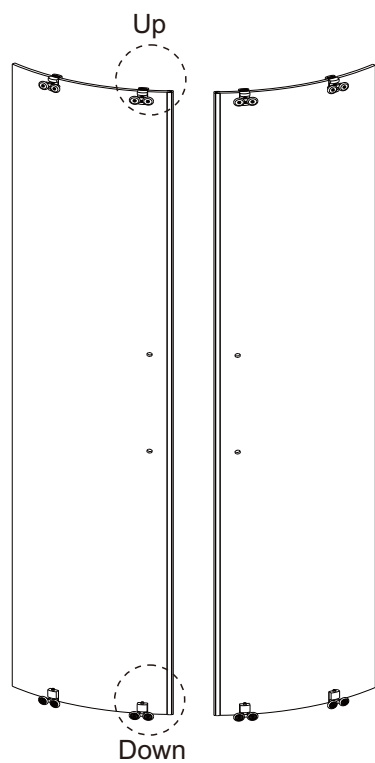
Step2



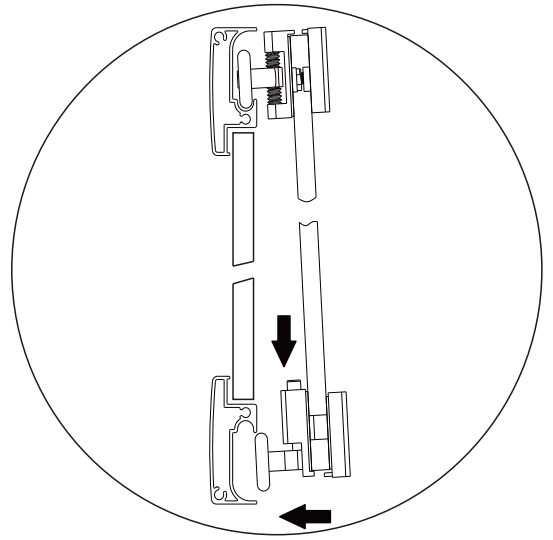
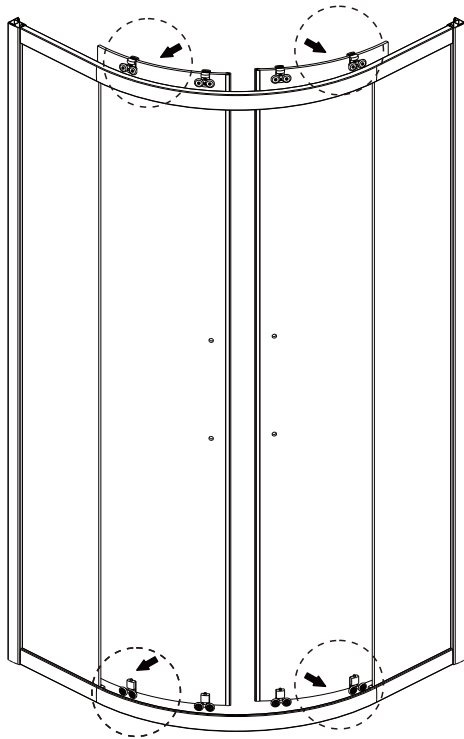
Step3



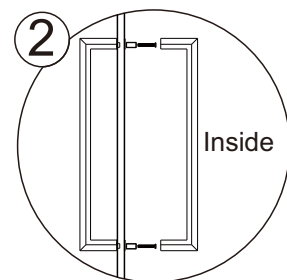
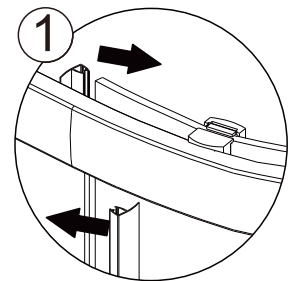
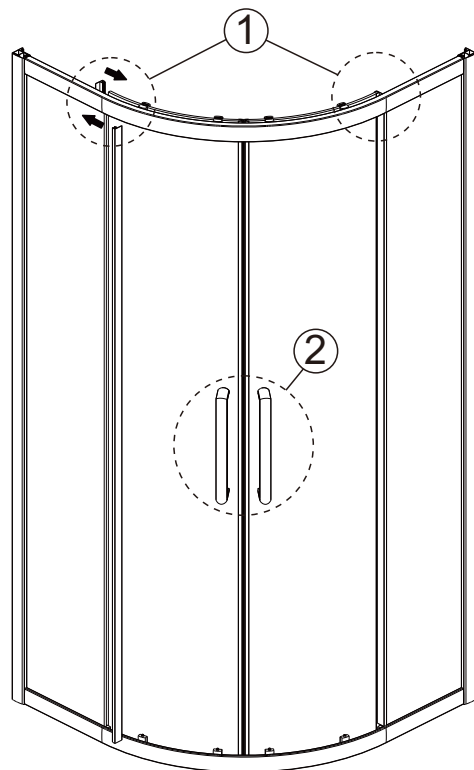
Step4



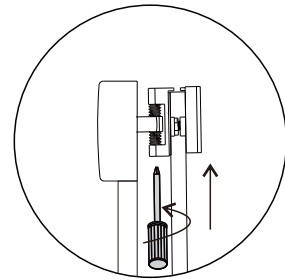
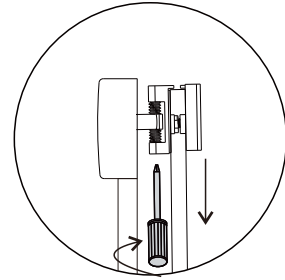
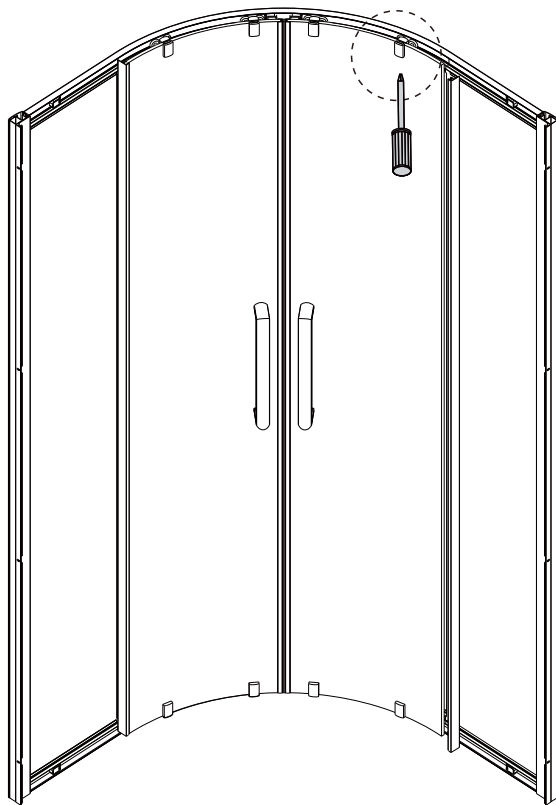
Step5



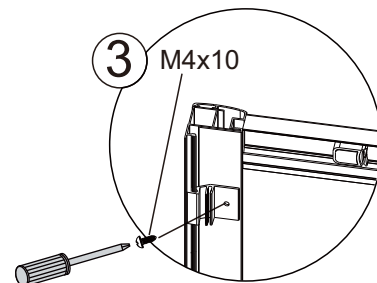
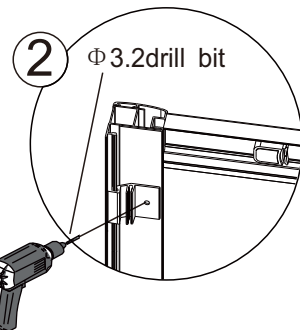
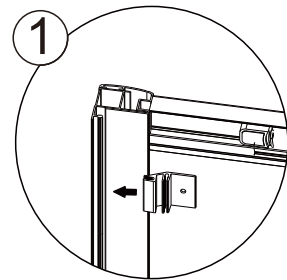
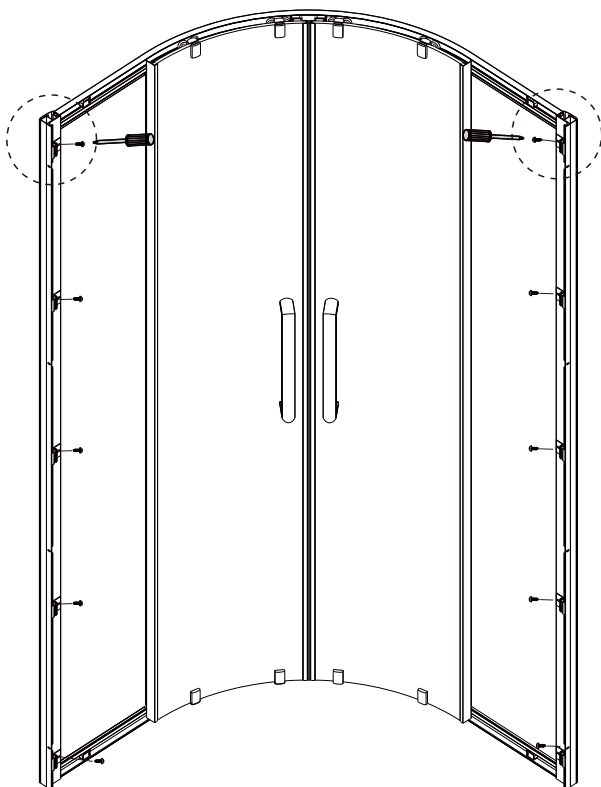
Step6



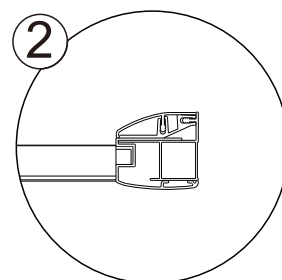
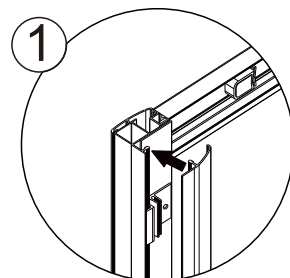
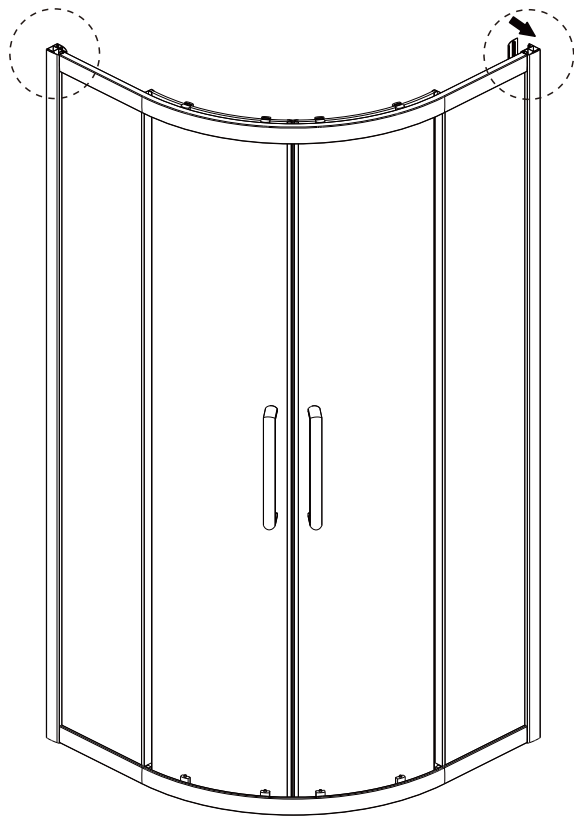
Step7



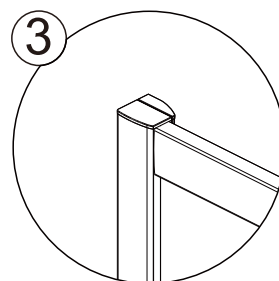
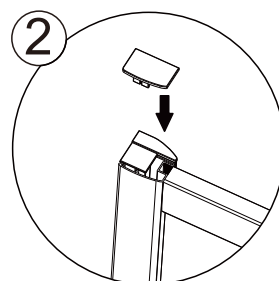
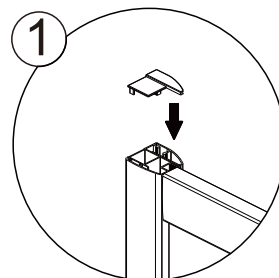
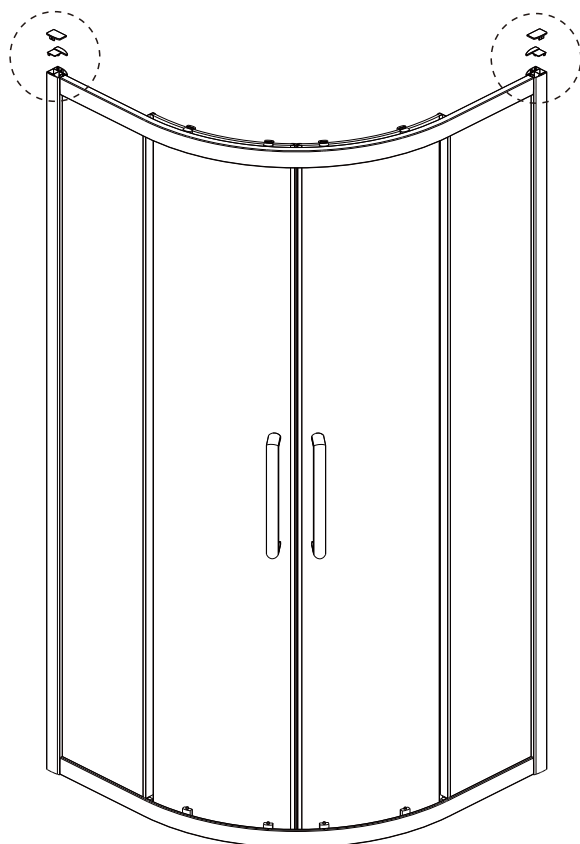
Step8



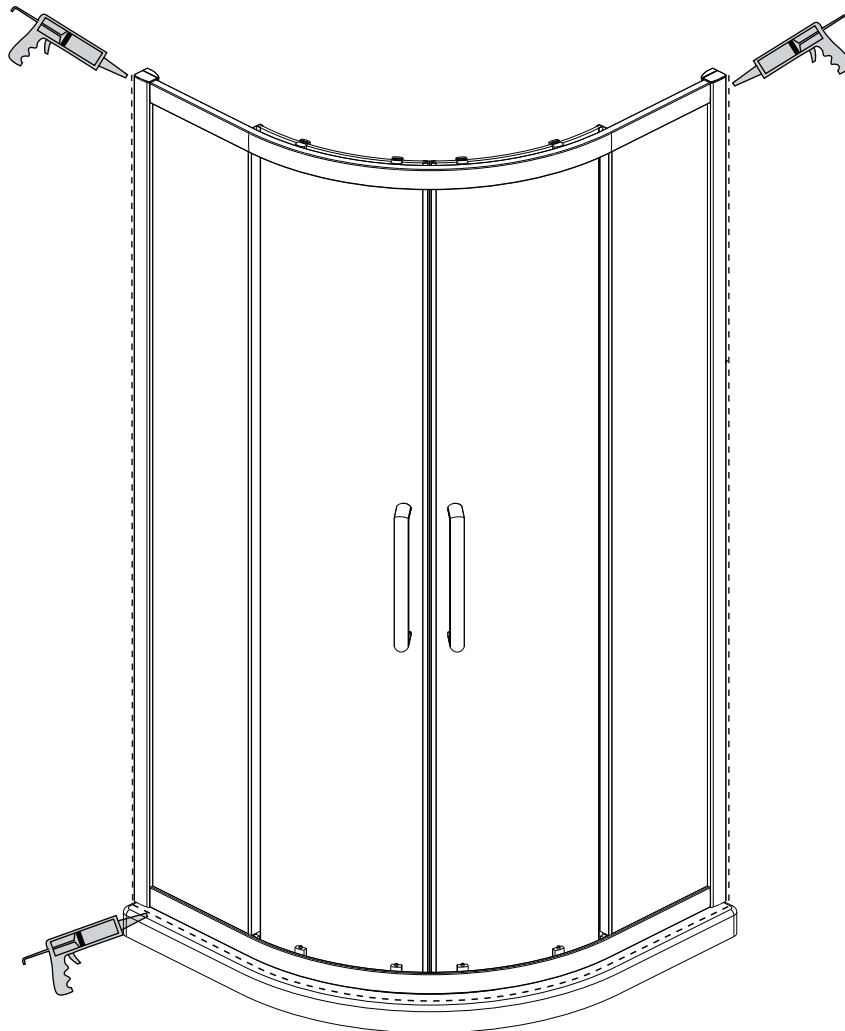
Step9



Step10



Step11



Allow 24 hours for silicone to dry before use.

Silicone on the outside edge only